



## Understanding the Registry Patient and Caregiver Initial Login Instructions

**Step 1:** Open the personal email account that you gave to your doctor when they added you to the Medical Marijuana Use Registry.

**Step 2:** Locate and open the emails with "Medical Marijuana Use Registry New User Account" as the subject line. One email contains your username (your username is the email you supplied to your doctor). The second email contains your temporary password. Remember your temporary password, you will use it to log in.

*Passwords in the Registry are case sensitive. Temporary passwords are in the following order: 3 capital letters, 2 lower case letters, 3 capital letters, a symbol and a number. For example, ABCdeHIJ#0 (please note that the lower-case L and a capital i look the same).*

\*If you do not find the "Office of Medical Marijuana Use New User Account" email, [click here](#) for additional information.

**Step 3:** Click on the Registry link provided in the email. This link takes you to the Registry's home page.

Florida Medical Marijuana Registry - [mmuregistry.flhealth.gov](https://mmuregistry.flhealth.gov)

**Mission:**  
To protect promote & improve the health of all people in Florida through integrated state, county & community efforts.

**Florida HEALTH**

**Vision:**To be the Healthiest State in the Nation.

**Ron DeSantis**  
Governor

**Scott A. Rivkees, MD**  
State Surgeon  
General

---

Patient # XX

Welcome new user, your temporary password is below. Your login id will be sent in a separate email. Please change it once you log in.

Current Password: **WSAwyIFJ,4** ← **Step 2: Your current password**

This temporary password will expire in 24 hours after the time this email was sent. You can receive a new temporary password by clicking on the "Forgot Password" link on the site

You can log in to the site here: <https://mmuregistry.flhealth.gov/>. ← **Step 3: The link to the Medical Marijuana Use Registry**

---

Florida Department of Health  
FLBoardOfMedicine.gov  
FloridasOsteopathicMedicine.gov  
FloridaHealth.gov

**PHAB** Accredited Health Department  
Public Health Accreditation Board

**Step 4:** Click "Log In."

**Florida HEALTH** **Medical Marijuana Use Registry**

HOME LOG IN ← **Step 4: Click "LOG IN"**

Welcome to the "new look" Medical Marijuana Use Registry!

- Only the look and feel of the Registry were updated. All Registry functions are the same.
- Don't remember your Username? If you're a Patient or a Caregiver, you'll use the email address your physician entered for you.
- Are you a new physician who wants access to the Registry? You can create your own account by clicking "Register" on the Log In page.
- If you have a Florida driver's license or ID card, the Registry will automatically provide the picture of your face to your application.
- Do you have a question? Please contact the Office of Medical Marijuana Use at: (800) 808-9580.

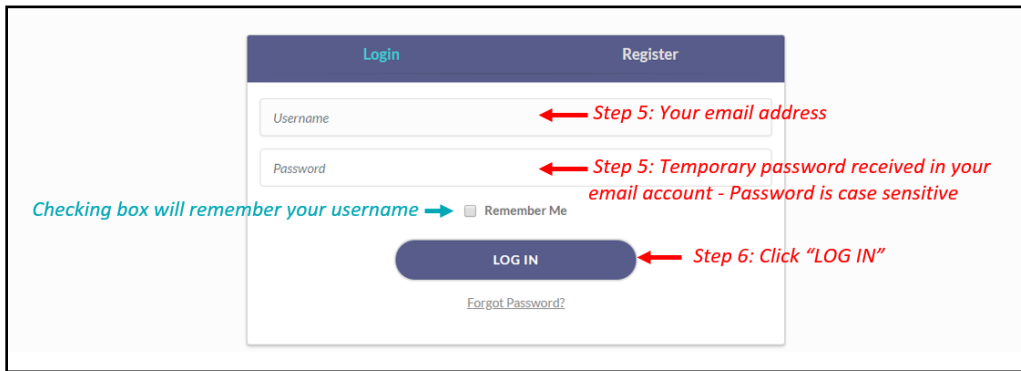
Did you know the Office of Medical Marijuana Use has Registry Instructional guides available? Please visit our department website to view them by clicking here: [Registry Instructional Guides](#)

Visit our Department website here: <https://knowthefactsmmi.com>

**Step 5:** Type your username and temporary password in the correct boxes on the screen.

*The temporary password is case sensitive, it is only valid for one successful login attempt and must be used within 24 hours of it being sent to you.*

**Step 6:** Click “Log In.”



After you log in, you will be instructed to change your password.

**Step 7:** Type your temporary password into the “Current Password” box (this is the temporary password that was sent to your email in Step 2).

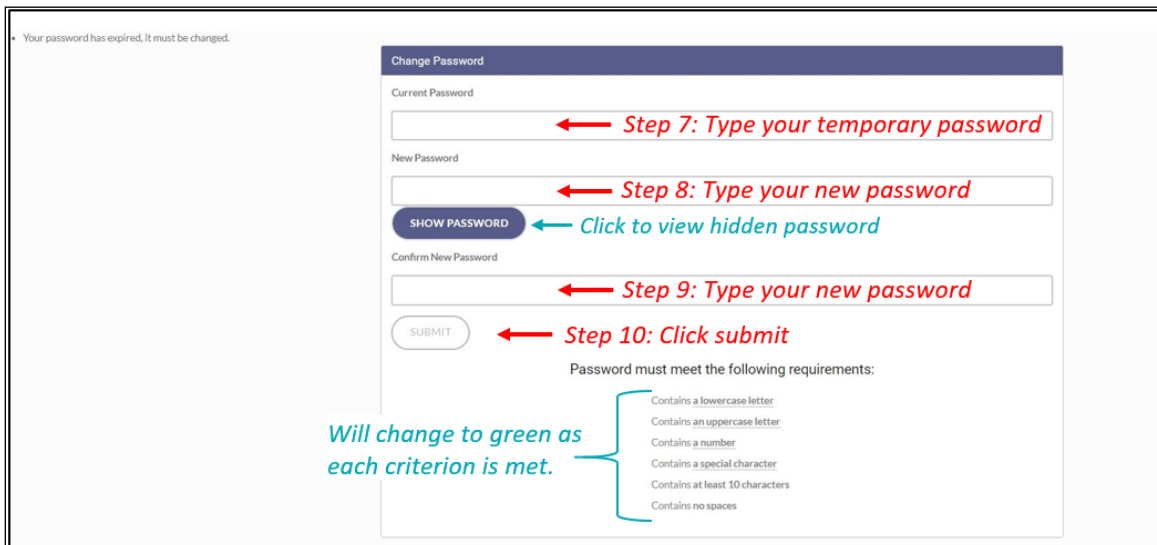
**Step 8:** Create your new password. You need to add a password to your Registry account that is unique to you. It must be 10 characters long and include each of the following:

- Lowercase letters (a-z)
- Uppercase letters (A-Z)
- Numbers (0-9)
- Special characters (!"#\$%&'()\*+,-./:;<=>?@[\\]^\_`{|}~)

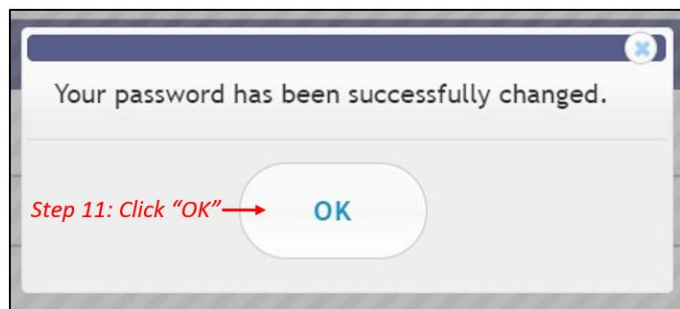
*\*You can click “Show Password” for help.*

**Step 9:** Confirm your new password.

**Step 10:** Click “Submit.”



**Step 11:** A confirmation message box will appear. Click “Ok.”



You will automatically be redirected to your Registry home page.